

Research Questions

*Developing a Focus to What Your
Study is Evaluating*



Jacob Campbell, LICSW
Heritage University

Fall 2019 SOWK 459

Agenda

- ◆ We will **identify** the qualities of a good research question.
- ◆ We will **write** good research questions for our proposals.
- ◆

Characteristics of a good (nomothetic) research question

- ◆ It is empirical, not ethical
- ◆ It is written in the form of a question
- ◆ It is clearly written
- ◆ It is not a yes/no
- ◆ It has more than one plausible
- ◆ It considers relationships among multiple variables
- ◆ It is specific and clear about the concepts it addresses
- ◆ It contains a target population

Good vs. Bad Research Questions

What percentage of youth use alcohol in Toppenish, Washington?

How does parents' educational level affect the use of alcohol among youth in Toppenish, Washington?

What are the effects of youth alcohol use in the United States?

What is the relationship between youth alcohol use and suicide ideation in Toppenish, Washington?

How many drinks does the average Toppenish youth drink in a typical week?

Good vs. Bad Research Questions

How does the number of drinks a youth has in a typical week relate to early initiation of sexual behavior?

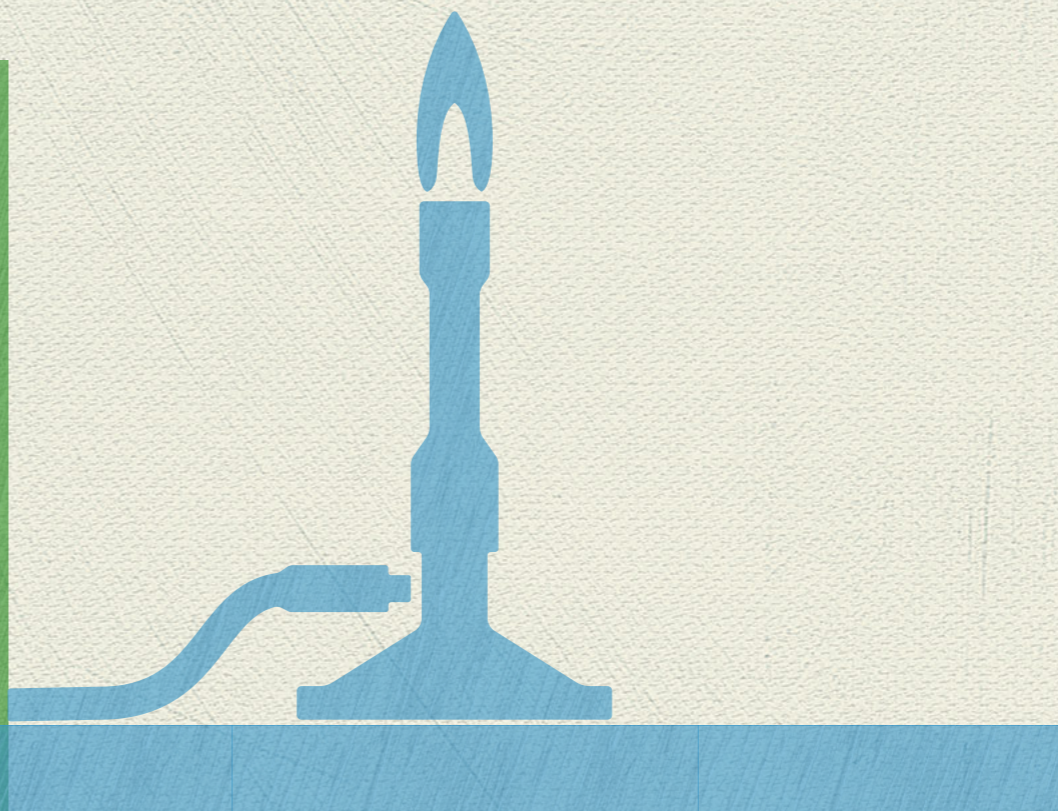
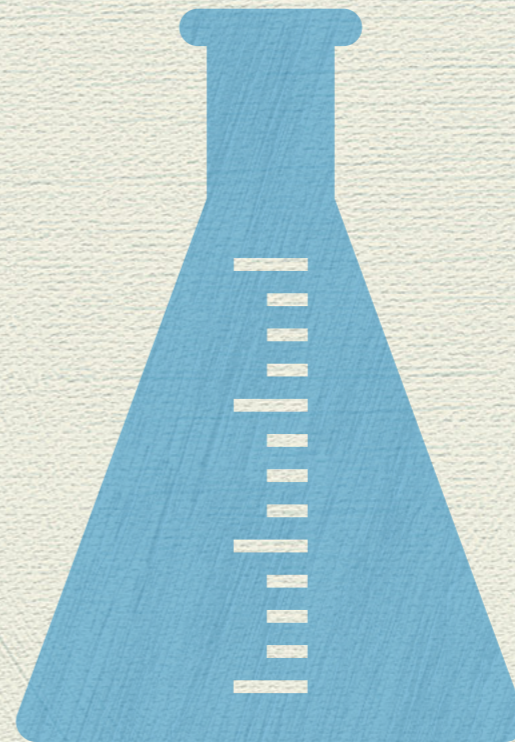
What are the causes of domestic violence?

How are schools addressing youth alcohol use?

What are the effects of alcohol prevention programs on the rate of alcohol use among Toppenish high school students?


Try It

Write a high-quality research question for your proposal.



Group Activity

Share your research questions in your group



Do they meet the criteria for a good research question

Do they have...
An independent variable
A dependent variable
A target population

Watch Words

IV- watch words: factors, causes
DV- watch words: effects, outcomes, effective, useful, efficient
Etc., so forth,

Qualitative Research Questions

Nomothetic Questions

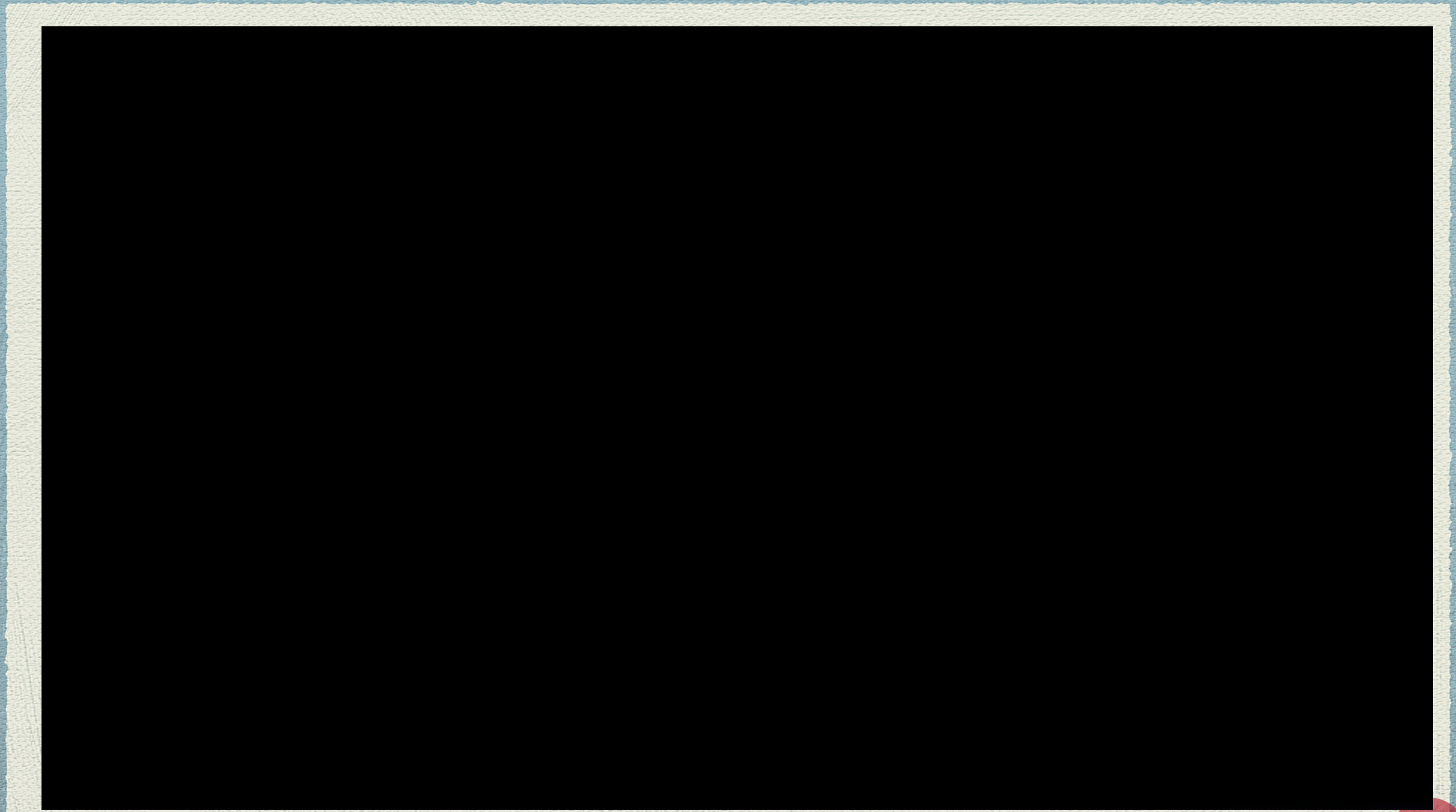
Theory-testing
Deductive reasoning
Generalizability
Prediction
Quantitative
Independent and dependent variables. Clear causality
Doesn't change during a study

Idiographic questions

What is true for a group of people, in one time and place
Theory-building
Inductive reasoning
Understanding
Qualitative
Many variables, complicated connections.
Open to change during a study

The power of vulnerability

Brené Brown



Nomothetic vs. Idiographic

What do you notice about this kind of research?

- ◆ Control & predict vs. listen & understand
- ◆ Clean & clear vs. unpredictable & complicated
- ◆ Objectivity & math vs. subjectivity & researcher-as-instrument

Figure 9.1 Example of Where to Find Reference Information for a Journal Article

